

# *Stratford General Hospital*

# Foundation Monitor

*Community Report ~ Making A Real Impact!* 2012/13



**Promises made; promises kept**

*Thank you to our donors for helping us keep our promise!*



# Making a Real Impact... A Year

## 2012/2013 Chair's Message



As a former nurse, a long time volunteer at Stratford General Hospital and the Board Chair of Stratford General Hospital Foundation, I've gained a lot of experience and perspective through the different "hats" I've worn.

From my point of view, I can honestly say that when it comes to quality healthcare, we have a lot to celebrate in Stratford and area.

Most of us are familiar with the pressures healthcare is under, especially with an aging population and limited resources. It makes some people wish for a time when things didn't change – at least not so rapidly.

But let's not forget that from adversity comes strength; and from caring comes the courage to meet new challenges and explore innovative – and often better options.

In responding to change, I think our hospital has succeeded where many have not. We've retained what's worth keeping, like our commitment to providing quality, compassionate care to all who come through our doors.

That commitment is strong. I've seen it in the way our nurses go out of their way to help a senior citizen...the way a volunteer holds a patient's hand following surgery...the warmth and kind words a physician uses when treating a child in the Emergency Department.

But we've also embraced the best of new. And look at the progress we've made in the last few years alone. Today, we have a much-improved hospital – new, clean and bright, and filled with some \$11 million worth of state-of-the-art technology and equipment to serve our patients better.

And when it comes to new technology, it would be impossible to ignore the impact our new MRI has had – and is having each and every day. Many of us know someone who has already had an MRI. Most of us have a friend or family member who will need an MRI at some point.

Each year, some 4,100 patients from throughout our area will now have quicker, easier access to this life changing/life saving technology closer to home with a waiting list of days – not months.

These are tremendously positive changes in our care and the impact they have on our lives is real and measurable in the exceptional quality of care we continue to get at our hospital.

But it's only possible because of the amazing support we have from donors in Stratford and throughout our region. Many of our donors have been with us for years. They've stuck with us through different campaigns and continued to help us shape a stronger, healthier, more responsive system while meeting the priority needs of our hospital.

Perhaps surprisingly, many of our donors are new – nearly 3,000 first-time donors in the last two years alone. These are donors who were excited and motivated by our MRI Campaign and understood how their enthusiasm and generosity could Make a Real Impact on the way we care.

Whether you're a new or established donor, whether your contributions are large or small, and regardless of what motivates you to give...let me say how much we appreciate your vital support. Thank you.

While raising funds is always a challenge, there are a couple of things that make it easier: one is having a cause that people identify with – like the importance of maintaining and strengthening our health care; another is having the right team of people in place to help it happen.

I would like to extend my thanks to our Foundation Board – a knowledgeable and dedicated group of volunteers who draw on their experience and wisdom to help guide our Foundation to ever greater heights.

We are also very thankful and proud of our Foundation employees, Susan Grabarczyk, Michelle Jeffrey and Melissa Steinbach – and most of all Andrea Page, our Executive Director, whose knowledge, leadership and enthusiasm are an inspiration to us all.

Mary McTavish  
Board Chair

## 2012/2013 EQUIPMENT PURCHASES

The Stratford General Hospital Foundation disbursed **\$1,821,599.05**.

The items sponsored through our donors' generosity include:

- 2 Patient Bedside Exam Stools
- Short Junior Cart with Key Lock
- 3 Over Bed Tables
- CADD-Legacy PCA Pump
- Clinical Recliner
- MRI – **\$1 million** towards MRI
- Building Redevelopment – Main Lobby – **\$751,551.64**
- Hospital Staff Education

Please visit our website  
[www.sghfoundation.org](http://www.sghfoundation.org)  
for a complete list.

STRATFORD GENERAL HOSPITAL  
*Foundation* ♥



# to Remember . . . Highlights!

■ The Volunteers of the Stratford General Hospital continue to raise money towards their \$1 million pledge for essential medical equipment including a \$500,000 digital mammography machine. An additional pledge of \$100,000 to name the MRI Control Room and \$8,010 for an MRI Audio System also has a great impact on patients! HELPP Lottery proceeds go towards their Heart & Soul pledge and also purchase a \$4,100 mattress therapy system to help prevent bedsores.



■ Physicians not only smashed their \$200,000 Medical Staff Campaign goal, with total physician support exceeding \$300,000. They also exceeded their MRI goal of \$30,000 raising over \$138,000. Special thanks to Drs. Laurel Moore, Miriam Mann and Brian Hughes for their efforts, and all physicians for their generous support!

■ It has been a year of recognition...The Foundation was recognized receiving the Association of Fundraising Professionals (AFP), Golden Horseshoe Philanthropy Award. SGH Foundation won the award for Small Organization Fundraising Excellence, reflective of the Foundation team's success building a culture of philanthropy, and exceeding fundraising goals. A salute to Stratford Chamber of Commerce Business Excellence Award winners – Humbled by the service, dedication and commitment of this group!!! We were honored to tie (the first ever) in the Community Service category – Judges announced co-winners in this category – Stratford General Hospital Foundation and Stratford-Perth Family YMCA.

■ Donors continued to respond generously to our mail appeals, with \$262,198.80 given through our Seasonal appeal and \$96,291 in our Spring 2012 MRI appeal.

■ Special events have a tremendous impact! The Royal LePage/Hiller Realty golf tournament raised \$19,500. Whether it's long standing events like the Perth County Flying Club Fly-in Breakfast or newer events like Positive Spin raising \$14,500 in its 6<sup>th</sup> year – community support has a great impact.

■ Over the last few years the Foundation has disbursed almost \$16 million to the redevelopment project, including \$2.4 million for PACS and this fiscal year's **\$751,551.64** towards equipment, construction, furnishings in the Main Lobby including enhancements to the Volunteer Gift and Coffee Shops.

■ One year anniversary of the MRI Grand Opening Ceremony was on March 31st! A total of 4,200 scans in one year impact the lives of patients and their families.

■ To date \$2.6 million has been disbursed towards the cost of the MRI. We have less than \$100,000 to raise before reaching the \$3.8 million Making a Real Impact MRI campaign goal in cash and pledges.



■ Main Lobby Ribbon Cutting Ceremony Officially Opens New Gift & Coffee Shops. Hospital staff and volunteers were on hand at a ribbon cutting officially opening the new Main Lobby, and celebrating the Volunteers of Stratford General. As the gateway in to our hospital, the new lobby forms the first impression many people have of our facility. It's bright, roomy, and welcoming – the very feeling we want to convey to our patients, visitors and staff.





### Dr. Kevin Lefebvre

The MRI has not only met, but exceeded my expectations.

Before the MRI arrived many of my patients with rectal cancer or biliary tract problems were having to go to London for an MR and having much longer waits. Now

these patients are getting an MRI much quicker and closer to home. That leads to a faster diagnosis which allows them to be seen at the Cancer Centre quicker or have their biliary tract problem corrected, and for therapy to start much faster. The MRI has had a huge impact in that regard.

For many of my patients it's the first time they've ever used an MRI, but most have stories of friends who needed an MRI and it took forever. So when we're able to have it done within a couple of weeks, it makes a big impression on people. That's also true for patients who

are struggling with the idea that they may have a cancer and wondering why they have to wait so long for an MRI and treatment to begin. Speeding up that process may not make much difference from an oncological standpoint, but psychologically it's huge.

As a general surgeon I'm using the MRI for more and more patients and it has largely replaced some of our more invasive tests. And if you can answer your questions using a non-invasive test and eliminate the risks, then that's always better for your patients.

It has also had a huge impact on patient treatment planning – helping us decide whether certain cancers should be treated with chemotherapy and radiation before surgery, or whether those patients are best treated with surgery first with the option of chemotherapy or radiation after.

Bringing an MRI to Stratford was worth the investment – and then some. We're now able to do things for our patients that are both new and better, and we're able to do that purely because of what people have donated. I can't stress enough the importance of having that MRI here, and more importantly encouraging people for that last push towards the MRI fundraising goal.



### Dr. Mark Diotallevi

I have been practising as a family doctor in Mitchell and Stratford for 24 years.

The care I provide for my patients is only as good as the resources I can bring to bear. These resources include the many specialists, nurses, midwives, therapists and other allied health professionals that I can call on to help

me care for my patients.

But equally important are the technological resources available to me when I need to make an accurate, timely diagnosis. Once the diagnosis is clear, I can begin treating the patient appropriately. Then, not only do they start feeling better...so do I!

Our new MRI scanner, located at Stratford General Hospital, has without a doubt, been the most exciting and useful addition to the diagnostic tools available to me. In the short time that we have had the MRI, there have been many examples in my practice where the MRI has had a profound effect on my patients.

The first person to come to mind is a 29 year old patient who was having fairly severe intermittent low back pain. He worked at a job that involves heavy labour, and he was worried that he would have to quit. He was also planning to marry soon. X-rays of his spine were normal, and a CT scan showed a minor problem with a lumbar disc, that may have been causing his symptoms.

I suggested an MRI, but the wait was going to be long, and it was painful for him to sit in a car for very long, so he declined the test. Shortly after that our new MRI arrived, so I booked an MRI of his spine, which he was able to have within a few days. This showed a tumour in his lower spine. Although the tumour was benign, it was growing quickly and would eventually have caused permanent neurological damage.

He underwent fairly urgent surgery and the tumour was removed. He is now pain free, married, the father of a little girl, and his wife is expecting again (all in the short time that we've had the MRI!) He is grateful that he is able to keep working and support his family, and I am grateful that his diagnosis and treatment was completed before any permanent damage was done.

The MRI scanner has improved the quality of his life, just as it has improved the quality of the medical care I can provide.



### Dr. Brian Hughes

As a physician, I have been exceptionally pleased with the service provided since the installation of the MRI equipment at Stratford General Hospital.

For our patients with one sided hearing loss or specific types of dizziness, we utilize the MRI scanner several times per week, specifically looking for small tumors arising near the inner ear.

We have been very impressed with the MRI results obtained here in our Hospital and I know the patients find it much more convenient to have an MRI scan performed close to home and avoid lengthy travel to other centers for scanning, which was necessary in the past.

In addition to the reduced travel, we now have the ability to obtain the scan in a much more timely fashion, often within days or weeks. In the past, patients would sometimes wait months to have an MRI at other regional hospitals. The shorter wait times greatly reduce patients' anxiety and concern about delays in obtaining these important test results.

I have received very positive feedback from dozens of patients living in Stratford and other areas of Huron and Perth counties, who have had the benefit of this state-of-the-art technology now available at Stratford General Hospital. Having this type of diagnostic tool available locally to our patients makes a difference in our ability to detect and treat disease which can sometimes be difficult or impossible to find with other types of testing.

If you have not already done so, I would strongly encourage you to support the MRI fundraising campaign as it reaches its final phase. You really can make a difference!





# Promises made, Promises kept...

it's a phrase that covers  
so much at our hospital:

- the promise every staff member makes to do their best in performing their role in patient-centred care
- the promise of every team member to ensure exceptional care
- the promise of our community and donors in making an impact and being engaged as an integral part of the healthcare team
- the promise of the Foundation to be committed to the highest standards of philanthropy, accountability and donor relations.

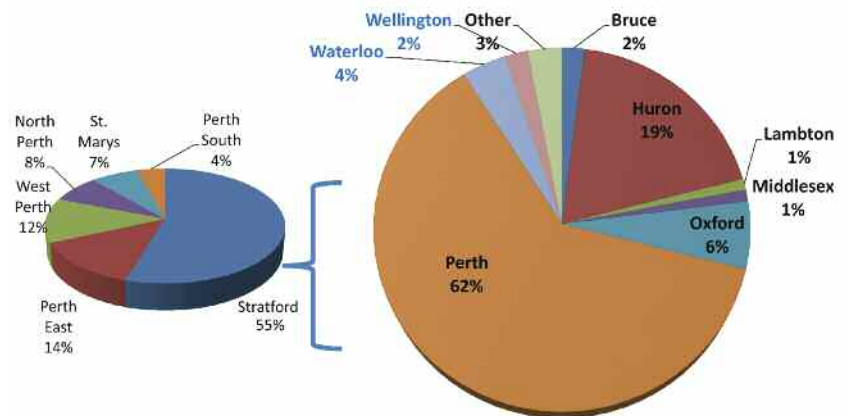
*Thank you to our donors  
for helping us keep  
our promise!*

STRATFORD GENERAL HOSPITAL  
*Foundation*   
"People Caring for People"

## Did you know? in 2012-2013

- ◆ 1,155 babies were delivered
- ◆ 96 babies were treated in the Special Care Nursery
- ◆ 24,573 patients were seen in our Emergency Department
- ◆ 2,130 inpatient surgeries and 11,014 day surgeries were performed
- ◆ 152 children were treated as inpatients on the pediatric floor
- ◆ 385 Mental Health Inpatients were cared for
- ◆ 1,348 Patients were treated in ICU and Telemetry Unit
- ◆ 28,853 x-rays were taken and 10,067 CT scans were performed
- ◆ 14,174 ultrasound exams, 2,159 nuclear medicine exams, and 2,804 echo cardio exams were performed
- ◆ 2,706 mammography exams and 2,540 Ontario Breast Screening Program (OBSP) exams were performed
- ◆ 3,552 MRI scans were performed

### Acute Inpatients in SGH FY11/12



## Governance & Stewardship – Volunteer Board



STRATFORD GENERAL HOSPITAL  
*Foundation*   
"People Caring for People"

### Stratford General Hospital Foundation Board of Trustees 2012 - 2013

Seated Left to Right: Mary McTavish - Chair, Debbie Reece - Treasurer, Brent Hiller  
Standing Left to Right: Chris Thomson, Andrea Page - Executive Director, Bob Gulliford, Rick Orr  
Absent: Heather Lennon, Tom Parisi - Vice Chair, Dr. K. Sparrow, Andrew Williams



# Making A Real Impact . . . A Salute

Each donation is precious, and every donor is priceless...individuals, groups,



## Royal LePage Hiller Realty Team Celebrates 13 Years of Support

Royal LePage Hiller Realty agents were on hand for a special tour of the New North Wing and the MRI Suite celebrating over 13 years of support of hospital needs for equipment, the Heart & Soul and MRI campaigns totaling \$221,651.41 through the Golf for the Health of It Tournament.

**Back row L to R:** Maria Walsh, Mike Walsh, Dave Logan, Paul Schumm, Jane Landreth, John Hart, Wendy Atkins, Terri-Lynn Hart. **Front row L to R:** Chris Evans, Dave Harwood, Brent Hiller, Barb Hiller Thibeault, Sherrie Roulston, Paul Carnegie. **Absent:** Mike Slattery, Jonathan Temple, John and Annette Vyge.



## Chemo Tablets and Netflix Subscription

L to R, Stricklands staff: Tyler Jantzi, Marketing Co-ordinator and Brenda Bannon, Business Manager. SGH Chemo RNs: Rose Iacobellis, Connie MacEwen and Beth Gleadall.



## Winners of the Stratford General Hospital Foundation/Volunteers of Stratford General Hospital Raffle are:

- 1st Prize -** Ernie Bakes, winner of the Je t'adore Montreal VIA Rail Travel Voucher (Value \$1,627). Travel voucher generously donated by VIA Rail Canada.
- 2nd Prize -** Steve McGraw winner of the Apple iPad (Value \$469).
- 3rd Prize -** Pam Tidman, winner of the Kobo Glo e-reader (Value \$146).

We can never say thank you enough to VIA Rail Canada for their donation of a Je t'adore Montreal VIA Rail Travel Voucher Valued at \$1,627-- the fabulous first prize in the Volunteers of Stratford General Hospital – Stratford General Hospital Foundation Raffle, 2013. The draw was held in the front lobby of SGH at 12 noon on Thursday, February 14, 2013. The \$4,435.24 proceeds from this fundraiser will be used towards the Volunteers of Stratford General Hospital's pledge to the Heart and Soul Campaign



## Legion Mixed Dart League Hits Bulls-eye with MRI Donation.

A special thanks to the Legion's Mixed Dart League whose support reaches the \$500 mark towards the MRI.

**L to R:** Judy Carrick - President, Trish Grzesik - Vice President, Andrea Page - SGH Foundation ED, Freda Wood -Treasurer, Mark Holden, Valerie Holden. **Absent:** Jeremy Hunt - Statistician, Karen Cook.





# to Our Community's Generosity!

and businesses building a brighter future for healthcare throughout our region.



## Flex Physiotherapy

A special thanks to Flex Physiotherapy for their fundraising efforts in support of the MRI. On hand for presentation of their wonderful gift of \$1,320 was Anita Dubé of Flex Physiotherapy, and prize winner Korey Petrie.

L to R: Andrea Page - SGH Foundation ED, Korey Petrie, Anita Dubé - Flex Physiotherapy.



## SMILE Cookies Take a Bite Out of MRI Goal.

A special thank you to all 4 Stratford Tim Hortons stores for their donation of 100% of Smile cookie proceeds to the MRI. Some \$14,400 was raised through the sale of the special chocolate chunk cookies sold between September 17th to 23rd at Tim Hortons locations in Stratford.

L to R: Mat Cooper – Tim Hortons, Jeff Kerk – Program Director of Medical Imaging, Megan Adair and Cheryl Moore – Tim Hortons, Andrea Page - SGH Foundation ED, Robbin Hewitt – Tim Hortons.



## CIBC CARES

Local CIBC Management and staff were on hand for a special tour of the Breast Assessment Centre celebrating their tremendous support of the Heart & Soul campaign which named the reception and waiting area in the BAC.

Back row L to R: Owen Smelski - Senior Manager Agriculture and Business, Mary Merkel, Andrea Page - Executive Director SGH Foundation, Cindy Schultze, Ruth Lacey. Front row L to R: Kelly Lindsay - Assistant Branch Manager, Bonnie Mulligan, Kaisa Schneider, Kelly Williams - Branch Manager.

A salute to the **Festival Jubilee IODE** for their \$10,000 gift towards a portable ultrasound unit for Maternal Child. Dr Hancock was on hand to demonstrate a new portable unit stressing the need for ultrasound after hours.

L-R: Dr Hancock, Festival Jubilee IODE members, Michele Alblas, Debbi Parks (President) and Andrea Page, SGH Foundation.



## Beta Sigma Phi Convention 2012 Supports Breast Health.

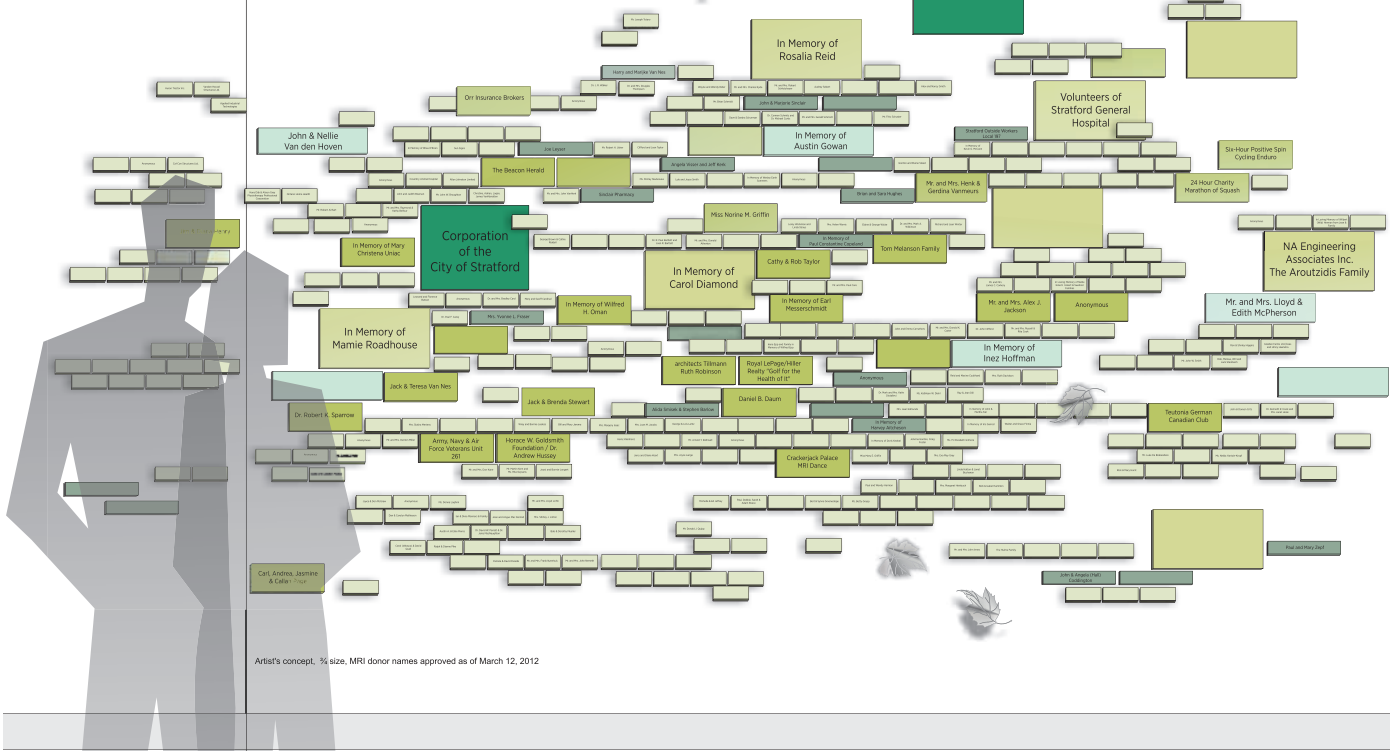
Organizers of the successful May 2012 Beta Sigma Phi Convention held at the Arden Park had a chance to tour the Breast Assessment Centre in the North Wing. RN Deb Moon shared information on digital mammography, breast biopsies, low wait times and the patient focused care provided by the Centre. A tremendous cheque for \$11,000 was donated to support breast health.

L to R: Barb Hobson, Convention Co-Chair, Beta Sigma Phi; Andrew Williams, CEO, Huron Perth Healthcare Alliance; Andrea Page, ED, SGH Foundation; Carolyn Bell, President Stratford City Council, Beta Sigma Phi; Mary Black, Convention Co-Chair, Beta Sigma Phi; Marg Illman, Convention Co-Chair, Beta Sigma Phi; Deb Moon, Breast Assessment Centre Co-Coordinator, RN-CBPN-IC.



# MRI

*Donors Make A Real Impact*



- Visionary Society
- Major Benefactors
- Benefactors
- Patrons
- Supporters
- Sponsors

## Donor Wall Recognizes Generous Supporters

It's not a Leonardo Da Vinci painting, but this piece of artwork is likely to be drawing a lot of attention – and maybe even the occasional fingerprint.

"We expect that and more," says Andrea Page, Stratford General Hospital Foundation Executive Director about the new MRI Donor Wall to be unveiled outside the MRI Suite on the evening of June 5th, following the Foundation's Annual General Meeting.

"We'll know we've exceeded our donors' expectations when we see smiles on their faces and see them searching for their own names on the wall," she says.

Made primarily of glass blocks of various sizes which represent different donor levels of support, the new donor wall was an original concept of Ms. Pages which was refined and built with the assistance of Brook Recognition, a leader in donor recognition systems.

Besides recognizing donors at various levels, the MRI Donor Wall's glass construction and leaf motif ties it to the Huron Perth Healthcare Alliance tree logo and connects it to the larger donor wall in the June Blanch Lobby.

"We already have some 450 donor names listed on our MRI wall, and with the flexible design we still have the opportunity to incorporate the names of people who have saved their support until the end of the campaign – or simply want to move up a level of support," explains Ms. Page. "In a few months from now, we'll be finalizing all the names and gift levels on the wall, as well as adding a special MRI recognition panel on our main donor wall in the June Blanch Lobby."

"The tremendous improvements we've made in our Hospital – including the MRI – have only happened because of the generosity of our donors," says Ms. Page. "We want to make sure they are recognized, revered and truly valued for their generosity."

Gift levels listed on the Donor Recognition Wall include: Transformational Gift Society (\$1 million+), Visionary Society (\$500,000+), Builder's Society (\$200,000+), Major Benefactors (\$100,000+), Benefactors (\$50,000 – \$99,999), Patrons (\$10,000 – \$49,999), Supporters (\$5,000 – \$9,999), and Sponsors (\$1,000 - \$4,999).





# Our Thanks to the following Donors FOR THEIR SUPPORT!

(as of April 5/13)

## **VISIONARY SOCIETY** (\$500,000 - \$999,999)

Corporation of the City of Stratford

## **MAJOR BENEFACTORS** (\$100,000 - \$199,999)

In Memory of Lawrence and Carol Diamond  
In Memory of Inez Hoffman  
NA Engineering Associates Inc.  
The Aroutzidis Family  
In Memory of Rosalia Reid  
In Memory of Mamie Roadhouse  
Van Nes Farms Ltd.  
Volunteers of Stratford General Hospital

## **BENEFACTORS** (\$50,000 - \$99,999)

In Memory of Austin Gowan  
Estate of Don Larkworthy  
In Memory of John Duncan Malcolm  
MR. & MRS. LLOYD & EDITH McPHERSON  
John & Nellie Van den Hoven

## **PATRONS (\$10,000 - \$49,999)**

Woodcock Brothers  
architects Tillmann Ruth Robinson inc.  
Army, Navy & Air Force Veterans Unit 261  
In Memory of Ed Belliveau  
Mr. and Mrs. Tom Collings  
Cooper-Standard Automotive - Mitchell Plant  
Crackerjack Palace MRI Dance  
DANIEL B. DAUM  
Miss Norine M. Griffin  
In Memory of William Haynes  
Jim & Diana Henry  
Mr. and Mrs. Alex J. Jackson  
Winston and Sheila Jibb  
Mrs. Marion Kalbfleisch  
TOM MELANSON FAMILY  
In Memory of Earl Messerschmidt  
In Memory of Wilfred H. Oman  
Orr Insurance Brokers  
Six-Hour Positive Spin Cycling Enduro  
Royal Canadian Legion Branch #8  
Royal LePage/Hiller Realty "Golf for the  
Health of It"  
Dr. Robert K. Sparrow  
24 Hour Charity Marathon of Squash  
Jack & Brenda Stewart  
Stratford General Hospital Medical Staff  
Stratford Hitmen  
Stratford-On-Avon Shrine Club  
Cathy & Rob Taylor  
Teutonia German Canadian Club

Horace W. Goldsmith Foundation /  
Dr. Andrew Hussey  
Tim Hortons - Stratford  
Ron & Jacky Tiplady  
In Memory of Mary Christina Uniac  
Mr. and Mrs. K.C. Vallis  
Jack & Teresa Van Nes  
Mr. and Mrs. Henk & Gerdina Vanmeurs  
3 Anonymous Donors

## **SUPPORTERS (\$5,000 - \$9,999)**

In Memory of Beula E. M. Day  
Brian and Sara Hughes  
Mrs. Margery Isaac  
ANGELA VISSER and JEFF KERK  
Joe Leyser  
In Memory of Margarete Liedtke  
Mrs. Reva L. MacDonald  
Dr. Douglas MacDougald & Ms. Barbara  
Green  
Mrs. Cora McCann  
Dr. Laurel E. Moore  
In Memory of Barbara Munro  
Optimist Club Of Downie Inc.  
Carl, Andrea, Jasmine & Callan Page  
Irene Paplinski  
Perth County Flying Club  
Mr. Donald J. Quipp  
Royal Canadian Legion Branch #532  
Karen and Glen Schlotzhauer  
Shirley Schmidt  
Scotiabank - Stratford Employees  
JOHN & MARJORIE SINCLAIR  
Sinclair Pharmacy  
ALIDA SMISEK & STEPHEN BARLOW

Stratford Outside Workers Local 197  
Harry and Marijke Van Nes  
Harold & Doreen Wagner  
Ken and Sharon Weitzel  
Paul and Mary Zepf  
2 Anonymous Donors

## **SPONSORS (\$1,000 - \$4,999)**

Accumetal Manufacturing Inc.  
In fond memory of my husband Ram  
Mr. Robert Airhart  
Mr. and Mrs. Ken Aitcheson  
Mr. W. Roy Aitcheson  
MICHELE and JACK ALBLAS  
Mr. James H. Algie  
Allan Johnston Limited  
Mr. Rennie Andela  
Art's Recreation Centre Ltd  
Mr. and Mrs. Donald Atherton  
Dr. Brian and Felicity Finn  
IN MEMORY OF "STANLEY CARL BALD"  
Mrs. Marlene Ballantyne  
Mr. Allan Bankert  
Mr. Robert Barbour  
Dr. R. Paul Bartlett and Joan R. Bartlett  
Mr. Bruce Beaumont  
Mr. and Mrs. Raymond & Kathy Belfour  
Mr. and Mrs. Gerald Beuermann  
Christine, Adrian, Logan, James Van Nynatten  
In Memory of Roland Blackmore  
Ms. June Blaine  
JOHN and JUDITH BOERSEN  
Ron and Mary Jo Bolton  
Mrs. Jacqueline Boulais  
Mrs. Florence D. Bowman



## SPONSORS (\$1,000 - \$4,999) ...cont.

Mr. Roy Bradshaw  
Brodhagen & District Chamber of Commerce  
Mr. John W. Broughton  
George Brown & Cathie Riddell  
Mrs. Berthilde Buhnlein  
LEONARD AND FLORENCE BUTSON  
In Honour and Love of Lynn Buxton  
Ms. Dorothy L. Byrne-Jones  
Cal-Con Structures Ltd.  
Ms. Anne Campbell  
Ross and Dorothy Campbell  
Mrs. Mary Rose Cannan  
Dr. and Mrs. Bradley Card  
Mary and Geoff Cardinal  
Dr. Paul F. Carey  
John and Emma Carruthers  
Mr. and Mrs. Donald K. Carter  
ELLA AND WALTER CATES  
Anonymously given with pride and respect  
in memory of Stuart S. Cheney  
Dr. John Clifford  
John and Mary Ann Cook  
Roger and Elaine Cook  
Mr. and Mrs. Russell & Rita Cook  
Mr. and Mrs. Paul Core  
Mr. and Mrs. James C. Corkery  
Mr. Roger Cotton and Ms. Marcia Matsui  
Reid and Maxine Coulthard  
Mr. and Mrs. Bill Cozyn  
Mildred Creech  
JOHN & DOREEN CRITS  
Cupe Local 1385 - City of Stratford  
Mrs. Ruth Davidson  
Mr. Luke De Brabandere  
Harry & Corry DeWys  
Russell and Jean Diamond  
Ms. Kathleen W. Diehl  
Mrs. Johanne Dietrich  
Hans Dijk & Alison Gray Physiotherapy  
Professional Corporation  
Ray & Jean Dill  
Mr. and Mrs. Charles W. Dingman  
Dr. Mark and Mrs. Katie Diotallevi  
Mr. and Mrs. Walter W. Douglas  
DANA & MIKE DOUPE  
Mrs. Marjorie Dugmore  
Ms. Shirley Dunbar  
In Loving Memory of Nellie Eckert.  
Eckert & Sweitzer Families  
Clive & Karen Edmonds  
Mrs. Jean Edmunds  
Shawn and Juliet Edwards  
Mr. Clarence Elg  
Bill & Susan Elliott  
EMMANUEL LADIES FELLOWSHIP  
SEBRINGVILLE, ONTARIO  
Irene Epp and Family in Memory of  
Wilfred Epp  
In Memory of Rhea O'Brien  
In memory of John & Martha Fair



Mr. and Mrs. Thomas Fairbairn  
Mr. and Mrs. Keith Fawcett  
Walter and Grace Finnie  
Joan and Terry Flanagan  
IN MEMORY OF IRIS GARROD  
The Wilhemine & Carl Pauli Foundation  
Ms. M. Elizabeth Gilmore  
JoAnna Gordon, Craig Foster  
In Memory of Doris Knebel  
Mrs. Eva May Gray  
Greenwood Court Congregation  
Miss Mary E. Griffin  
Mr. and Mrs. Andy Groenestege  
Mr. and Mrs. Arnold Groenestege  
Bert & Sylvia Groenestege  
Ms. Betty Gropp  
Greiden Farms Ltd./Cees and Hinny Haanstra  
Ms. Patricia Hall  
Mr. and Mrs. Jack H. Hallam  
Ms. M. Elaine Hamilton  
BOB & ISABEL HAMILTON  
Paul & Norma Hansen  
Chris and Don Hart  
Linda Hatton & Janet Buchanan  
Mr. Vic Hayter  
Mr. and Mrs. Glen Hebel  
Mrs. Margaret Heinbuch  
Mrs. E. Alveretta Henderson  
Mr. and Mrs. Jim & Ollie Henry  
Herb Wagler Construction Ltd.  
In Loving Memory of WILBERT (WIB)  
HERMAN from Jean & Family  
Paul and Wendy Herman  
Ron & Shirley Higgins  
Mrs. Evelyn (Wesley) Hinz  
Mr. and Mrs. Burns Holden  
Mr. Clarence Holmes  
Mr. W. Warren Holmes  
Mr. Donald Hook  
Dr. Kenneth R. Hook and Mrs. Janet Hook  
Rick & Mary Horst  
Mr. Robert Hoy  
Mr. and Mrs. Harry & Michelle Hulman  
Mr. William Hulman

The Hulme Family  
Huron Tractor Ltd.  
In Memory of Kenneth Hurst  
Independent Order of Foresters  
Ms. Stephanie Inglis  
Mr. and Mrs. John Innes  
J. W. Kelly's Electric Ltd.  
Ms. Joan M. Jacobs  
BILL AND MARY JAREMA  
MARY JAREMA AND IN HONOUR OF  
WILLIAM JAREMA  
Mr. Stewart Jeffray  
Michelle & Ed Jeffrey  
In memory of Jack Robertson,  
Sept. 24, 1935 - Nov. 25, 2009  
Mr. and Mrs. Gregory F. Johnson  
Joost and Bonnie Jongert  
Mr. and Mrs. John Julian  
WAYNE AND BETTY KALBFLEISCH  
Mr. and Mrs. Don Kane  
Mr. Martin Kern and Ms. Rita Geysens  
Marjory and Jim Kilgour  
In memory of Sheila Proctor  
IN MEMORY OF FRED KIPFER  
HEINZ KLEINHENZ  
Knights of Columbus Council 9252  
Jerry and Diane Koert  
Gerard W. & Anna Kolkman  
Koskie Minsky LLP  
Mr. and Mrs. Frank Kuttschutter  
Mrs. Joyce Lange  
GEORGE & LOIS LANTZ  
Wray and Bonnie Lealess  
Mrs. Emmalien Licht  
Mr. and Mrs. Lloyd Licht  
The Licskai Family  
Mrs. Shirley J. Linton  
Ms. Donna Loghrin  
Dr. E.M. Loney  
ARTHUR & ELLEN LUCY  
Lutheran Women's Missionary League -  
Second St. John's, Wartburg  
Joan and Angus Mac Dermid  
Mr. and Mrs. John H. MacDonald





WALTER & MARIAN MACDOUGALD  
 Mr. and Mrs. Alastair MacLeod  
 IAN & DIXIE MANNERS & FAMILY  
 Dan & Carolyn Mathieson  
 NORA and ROBERT MCCALLUM  
 In memory of Joseph McCann  
 Ross & Linda McCorquodale  
 Mr. John R. McDonald  
 JOYCE & DON MCGRAW  
 Mrs. Mary McGugan  
 Mr. and Mrs. Lorne McKinnon  
 McLean Taylor Construction Ltd.  
 Mr. and Mrs. Alexander McMillan  
 Jim and Ilse McMillan  
 Bob & Mary McTavish  
 Mr. and Mrs. Bert A. Mennie  
 Mrs. Statira Mertens  
 Mr. and Mrs. Denton Miller  
 Mr. George N. Miller In Memory of  
     E. Jeanne Miller  
 Patricia L. Million  
 Donald and Colleen Misener  
 Coventry Animal Hospital  
 Moffatt & Powell Rona - Mitchell Store  
 Mr. Donald J. Mohr  
 Montagu Smith Charitable Foundation  
 Mornington Communications Co-Op Ltd.  
 Leslie and Christian Morton  
 Bob & Dorothy Mueller  
 Mr. and Mrs. Tim Murphy  
 IN MEMORY OF LILLIAN MYERS  
 Mr. and Mrs. John Nemeth  
 Mr. and Mrs. Karl P. Neubrand  
 Mr. Timothy Nicholson  
 MR. AND MRS. FRANK NYENHUIS  
 Tricia O'Malley and Ronald Hikel  
 ONTARIO HOME HEALTH  
 Optimist Club of Mitchell  
 Matt Oswald  
 Pamela & David Paradis  
 Dr. David W. Parratt & Dr. Janis MacNaughton  
 Mr. and Mrs. Norman Parsons  
 Howard and Ruth Anne Pehlke  
 AUSTIN A. & ELSIE PIERCE  
 RALPH & DIANNE PIKE  
 Mr. and Mrs. Donald Pitts  
 Powerhouse Controls Limited  
 In Memory of Walter and Ruth Priestap  
 Mr. and Mrs. Arthur C. Puetz  
 CAROL (VELASCO) & DAVID QUAIL  
 R. J. Dungey & Sons Ltd.  
 Mrs. Betty Ranney  
 Mr. Arnold T. Rathwell  
 RBC Foundation  
 Paul, Debbie, Sarah & Adam Reece  
 Reinforced Earth  
 Wayne and Wendy Rider  
 Mr. Heinz Riedel  
 Donald and Olive Riehl  
 Mr. and Mrs. Ken & Carol Rock  
 Rotary Club of Festival City - Stratford

Mr. and Mrs. Paul Roulston  
 Mr. and Mrs. William Russell in memory of  
     Timothy Russell  
 Ruth Rebekah Lodge #2  
 Mr. and Mrs. Charles Ryde  
 Mr. and Mrs. Robert G. Savage  
 Ron Savile & Audrey Sebert  
 GARY & JUDY SCHELLENBERGER  
 Mr. and Mrs. Robert Schlotzhauer  
 MURRAY AND HEATHER SCHLOTZHAUER  
 Mr. and Mrs. Robert Schlotzhauer  
 Mr. Brian Schmidt  
 Mr. and Mrs. Brian & Carol Schmidt  
 Mr. Earl Schmidt  
 Mr. and Mrs. Gerald Schmidt  
 Dr. Carmen Schmitz and Dr. Michael Curtis  
 DAVE & SANDRA SCHURMAN  
 Mr. Fritz Schuster  
 Mr. and Mrs. Alan W. Scott  
 Applied Industrial Technologies  
 Seaforth Harmony Kings  
 SGH Staff Association  
 Mr. Robert Shantz  
 Mr. Kenneth R. Sharpe  
 Mrs. Margaret Shillolo  
 Mrs. Arlene Sinnamon  
 Ms. Shirley Skubowius  
 Alex and Nancy Smith  
 Mr. John W. Smith  
 Lyle and Joyce Smith  
 Mr. and Mrs. R. Sneddon  
 IN MEMORY OF WESLEY EARLE SOMMERS  
 Mr. Robert Sparling  
 24-Hour Squash Marathon  
 Stackpole International  
 Gordon and Elaine Steed  
 Rob, Melissa, Will and Jack Steinbach  
 Mr. Wallace Steinman  
 In Memory of Kevin G. McCann  
 Stratford Concert Choir Association Inc.  
 Mr. and Mrs. Ivan Stueck  
 Sun Signs  
 WILLIAM & MARILYN SYLVESTER

Clifford and Joan Taylor  
 Mr. and Mrs. George Taylor  
 Dr. Lynne Teasell  
 The Gentle Rain Natural Food Store  
 Dr. Eric Thomas and Ms. Pamela Zabel  
 Dr. and Mrs. Douglas Thompson  
 Chris and Susan Thomson  
 Tiuta  
 Mr. Joseph Totaro  
 Mr. Robert H. Usher  
 Dr. Patricia Van Boekel  
 Mr. and Mrs. George Van Den Tempel  
 Vanden Heuvel Structures Ltd.  
 Ms. Corrie Vanderschot  
 Mr. and Mrs. John VanHerK  
 John & Eleanor Waldie  
 Dr. J. R. Walker  
 Mr. Jim Walsh  
 Mrs. Hannelore Walter  
 Walther's I.D.A. Pharmacy  
 JAMES and LORRAINE WALZ  
 Mrs. Helen Warris  
 Ms. Shirley Weitzel  
 Mrs. Marion Jean Wellwood  
 Andy Werner and Barb Hoyle-Werner  
 MITCHELL FIRE FIGHTERS ASSOCIATION  
 Mr. Timothy Whitlock and  
     Ms. Lyn Schlotzhauer  
 ELAINE & GEORGE WICKE  
 Mr. Hugo Wickenheisser in memory of  
     Wickenheisser & Merkel Family  
 Mr. and Mrs. Harold Wilhelm  
 Dr. and Mrs. Mark A. Wilkinson  
 Mrs. Dorothy Williams  
 Mrs. Helen M. Wilmot  
 Richard and Jean Winter  
 Mr. and Mrs. Harold Wisternoff  
 Leroy Workman and Linda Straus  
 Ms. Nelda Yantzie-Kropf  
 Your Neighbourhood Credit Union  
 Mr. Don Yundt  
 26 Anonymous Donors



# A Patient's Story . . . Darrin Bauer's MRI Story



It started one morning in late April. I woke up and just couldn't get out of bed; the pain in my lower back was so bad. My fiancée Becky had recently had surgery and was in a lot of pain herself. Helping each other out of bed would have looked like a comedy show – if it hadn't hurt so badly.

It was scary. All my life I've done physical jobs with a lot of lifting – moving furniture and the like. Even my current job at Stackpole has a lot of lifting and moving involved. I'd felt fine when I went to bed, but something had happened overnight.

I got in touch with my doctor who ordered two X-rays – one of my back, and one for my eyes. I didn't know at the time, but they were checking to make sure I didn't have any flecks of steel in my eye from an old injury, so that I could have an MRI if it was needed. My eyes were clear, but the X-ray showed I had what they thought was degenerative disk disease and arthritis in my back with a bulge in the spine.

But my doctor was being cautious. Some back injuries that aren't caught quickly and treated right can become permanent. I didn't want to be paralyzed from an injury like that, so I stayed off work, started on some medication to ease the pain, and waited for the MRI that my doctor felt was the next step to take.

I didn't have to wait long. Just a week after they contacted me with the X-ray results I was in for my MRI. I was shocked it happened so fast.

When I first saw the MRI it was a little scary, thinking I'd have to fit inside that tube. But the technicians were very nice and helpful and made me feel very relaxed. They gave me headphones to help block out the sound of the MRI, and talked me through the half-hour long scan. At the end of it, I was feeling so relaxed I almost fell asleep!

The MRI confirmed what the X-rays had shown – but with much better detail said my doctor. I've been off work now since the injury in April, and my doctor wants me to stay off work for another 12 weeks, but I'll have to go back sooner than that...we all need money to live. Hopefully, with the help of the medication I'm on I'll be able to do my job properly, and my employer seems willing to get me some temporary help with lifting and moving things. So we'll see how it goes.

I'm not much of a salesman, but if people can afford to donate money towards the MRI – even the money they spend on coffee each day – then it's going towards a good cause for sure.

---

## Positive Spin cycle event raises funds and fitness level

Participants in the 6th Annual, Six-Hour Cycling Enduro put a "positive spin" on cycling raising \$14,500 towards the Making a Real Impact MRI campaign. At the opening ceremony of the event cyclers were asked to hold up their hands if they have had an MRI in the past – some 50% said yes! Organized by Rhonda Gesinghaus-Vaters and her team of volunteers, this fun-filled event featured local teams and some of the city's top cycling instructors striving to keep both the wheels spinning and dollars coming in for MRI.

**A special thanks to sponsors ...**





# Donations in Honour of and in Memory of ...

The Stratford General Hospital Foundation is grateful to the family members and friends who have made Honour and Memorial donations from October 1, 2012 to April 30, 2013.

## In Honour of:

Barbara Beckett  
Katelyn Culliton  
Marilyn Holmes  
Mr. & Mrs. Rick &  
Deb Lange  
Howard & Marjorie  
Luckhart  
Ken & Donna Tuffnail  
Kathi Urbasik-Hindley

## In Memory of:

Kent Abbott  
Clive Abel  
Neil Agroff  
Helen Aitcheson  
Irene Anderson  
Murry Arthur  
Helen Atchison  
Donald Atherton  
Elfriede Backmund  
Barry Ballantyne  
Iona Ballantyne  
Janice A. Bantle  
Wilhelmine Battler  
Anna Beryl Bean  
Newton Bean  
Vernon Bean  
Ruth A. Beard  
Emmalene Bell  
Laurene Bennewies  
Dana "Dean" Bird  
Margaret Bird  
Alvin Boyd  
Barry Dion Brant  
Art Brickman  
Martha Brickman  
Ruby Brickman  
Bertha A. Brooks  
Owena V. Brooks  
Roger Brown  
Fred Bryant  
Gladys Bryant  
Irene Burford  
Garth Burrow  
Edward Burrows  
Aidan James Butler  
Al Campbell  
Russell Campbell  
Doris Cantelon  
Matt Carnochan  
Larry Cherrey  
Rosemarie Cheslock  
James Clarke  
Elsie Conroy  
Holly Cormier  
Winston Coulthard  
Glenda Creeden  
Harold Creeden

Anthony Culliton  
George F. & Barbara M.  
Culliton  
Mrs. Leila Davis  
Buela Day  
Jake de Koning  
Mabel Debus  
Scott Diamond  
Eva Dickson  
Lavern Diehl  
Marguerite Diehl  
Orval Diehl  
Ross Dobson  
Winifred Doerr  
Donald Doherty  
Malcolm Doherty  
Richard Doherty  
Theresa Dubblestyne  
Ethel Eckmier  
Ann Eggert  
Don Elligsen  
Jean Elliott  
Stephen Elliott  
Paul Emeny  
Lou Evans  
Marjorie Evans  
Alvin & Oleva Faulhafer  
Patricia Frame  
Dorothy Francis  
Judy Friemel  
Evelyn Froese  
Mildred Fulton  
Gordon Gaul  
Vincent Gavagnin  
Jeremy Gerber  
Muriel Gibb  
Betsy Gilmore  
Elizabeth Gimber  
Hans L. Gimber  
Cavalle Graviston  
Sidney Greenberg  
Nicholas Groenestege  
Shirley Hackett  
Verdella Harloff  
Catharine Harris  
Marion Harris  
William Haynes  
John Heimpel  
Alexander Henry  
William & Ardena Herlich  
Gerald Hesse  
Marie & Stewart Higgins  
Daryl Hodgins  
Angela Hogan  
Melanie Houben  
Teresa Hughes  
M. Ted Huitema  
Ruth Humphrey  
Joan Hunt

Kenneth Hurst  
Shirley Hutchison  
Marielle Jacques  
Dr. William Jamieson  
Jean Jervis  
Jessie Johnson  
Barbara Johnston  
Harold Jordan  
Marion Kalbfleisch  
George Kent  
Wladyslaw Krawczyk  
Frank Lang  
Doug Layton  
Catherine Leasa  
Lorne Leasa  
Kenneth "King" Lee  
Jack Listman  
Verna Lobb  
Nancy MacDonald  
Jean MacNaughton  
Audrey Martyn  
Alfred Maschke  
Donnelda Maslen  
Vivian Matthews  
John Mavity  
Grace May  
Nancy McDonald  
Archie McKenzie  
Terrie Lynn McRae  
Charlotte Meadows  
Dennis Middleton  
Edmund Mieczkowski  
Jeanne Miller  
Joe Montgomery  
Richard Mulholland  
Ken Mundy  
Helen Myers  
Lillian Myers  
Jean Neeb  
Ann Marie Needles  
Alexander Nichol  
Ray Nothdurft  
Dorothy O'Donoghue  
Wilfred Oman  
Doris Palmer  
Simone Palmer  
Elgin Pehlke  
Ross Penton  
Phylliss Pfaff  
Beryl Pickard  
Ethel Pollard  
Ruth & Walter Priestap  
Velma Prueter  
Frieda Rakoczy  
James Ranney  
Bonnie Reberg  
Donald Riehl  
Betty Riley  
Dianne Robinson

Barbara Rohfrietsch  
Frederick Rolleman  
Ernest Rose  
Nellie Roth  
William Rouselle  
Albert Ruby  
Paul Rumig  
Kathleen Ruston  
Ray Rynor  
Ken Schaefer  
Roy Schaubert  
Stanley Schellenberger  
Marilyn Schlemmer  
Dr. Elfriede Schuh  
Allan Scott  
Joyce M. Scott  
Donald Shiell  
Gloria Sibbernagel  
Ruby Singer  
George Smith  
Ruby Smith  
Leda L. Smitjes  
Almeda Smythe  
Jean Squire  
Tom Stilling  
Marion Stock  
Nylle Stuart  
Vera & Stan Taylor  
Tess  
John Timmermans  
Keith Tinning  
Frances Touzel  
Bonnie Traynor  
Adrian Van Nynatten  
Werner Van Wasen  
Betty Vivian  
Milton Vock  
Michael Von Lepel  
Ludmila "Mila" Voros  
Loretta Vuldere  
Nicole Wagler  
Doug Wagner  
Donna Walsh  
Eleanor Way  
Ernest Webb  
Martha Weeks  
Olive Weicker  
Margaret Wells  
Eloise Werner  
Doris Westman  
Ralph Wietersen  
Flora & Theodore Wilhelm  
John Wilker  
Barbara Wood  
Hildegard Wood  
Dean Woodcock  
William Wreford  
Helen Wurdell  
John A. Young



# Page's Page

## Do you remember when a promise was a promise? We do.

At Stratford General Hospital we know that the patients who come through our doors are often seriously ill, worried, stressed and feeling out of control. We promise each patient the very best of care – effective, efficient, compassionate care delivered by physicians, nurses and other caregivers who see you as a person, not just a patient.

That pledge of exceptional care, delivered by exceptional people, is a promise that's taken seriously throughout our hospital. It permeates our organization, extending far beyond those who directly care for patients, to all members of the team.

Last month, when we asked staff members at our Stratford General Hospital site to help us with a photo promising exceptional care to our patients, we were astounded when over 150 individuals showed up. Physicians stood by assistants; nurses next to volunteers; housekeepers beside administration.

Yes, we encouraged their participation with a Rheo Thompson mint smoothie bar, but that still didn't explain the impressive turn out – or the spontaneous round of applause that broke out when we'd completed the photo.

What did explain it, is the heartfelt pride and sense of commitment our physicians and hospital staff

feel in being on a team that can promise – and deliver – the quality care our patients, community and region deserve.

At the Foundation, we're beneficiaries of that promise. Almost daily we receive donations from staff members who "just want to give something extra" as well as from patients and families who want to show their support – whether it's to express their appreciation for a physician or staff member, or to help fund the purchase of vital equipment like our MRI. We're so fortunate.

But we also work hard to keep our promises – to create a relationship with our donors that's based on honesty, sincerity and trust.

Yes, we pride ourselves on helping the hospital meet its most important equipment and facility needs – putting the right tools and technology into the healing hands of our talented and dedicated caregivers.

But we're also committed to helping our donors fulfill their own hopes, dreams and wishes and recognizing their generosity appropriately. We've built a reputation on working with our supporters to help create a Hospital that meets and exceeds their needs and expectations – and doing it in a way that's genuine, forthright and transparent.

It seems to be working. As we approach the three year anniversary of the opening of our new, improved hospital, I think about how far we've come in such a short time. As we head towards the completion of our MRI Campaign – with less than \$100,000 left to raise – I feel a sense of pride and appreciation for our team...the doctors, nurses and other team members who work at our hospital...the volunteers and staff who help make our Foundation such a successful organization...and most of all for our donors whose generosity and commitment has helped us build a stronger hospital and keep our promise of a healthier future for us all.

## Exceptional care, Exceptional people, Exceptional donors.

*Thanks to our community for believing and investing in local healthcare – helping us to keep the promise of exceptional care supported by a strong foundation. A salute to all the Stratford and District Chamber of Commerce Business Excellence Award winners – Humbled by the service, dedication and commitment of this group!!! Our community is vibrant and strong due to the passion of so many businesses and organizations*

**COMMUNITY SERVICE AWARD** – Judges announced co-winners in this category – Stratford General Hospital Foundation and Stratford-Perth Family YMCA. L-R: SGH Foundation staff Melissa Steinbach, Susan Grabarczyk, Andrea Page and Michelle Jeffrey; and SGHF Board Chair Mary McTavish.



Photo credit Stratford Gazette





# Every Dollar Counts . . . Monthly Giving

Monthly giving is a tremendous way to ensure your gift works harder. It's the most effective way to provide steady, on-going funds to help Stratford General Hospital site. Not only is a monthly debit amount a more manageable way to give a generous gift — it saves envelopes and postage too.



**YES, I WANT TO JOIN YOUR MONTHLY GIVING PROGRAMME!**

Yes, I authorize *Stratford General Hospital Foundation* to withdraw the following amount from my bank account monthly. I may change the amount or cancel my monthly contribution at any time by notifying *Stratford General Hospital Foundation*.

Once a month I will give:  \$10  \$20  \$50  \$100  Other \$ \_\_\_\_\_

I authorize the Stratford General Hospital Foundation to draw on my bank account through my financial institution on the 1st of each month beginning \_\_\_\_\_  
Date

\_\_\_\_\_  
Signature Date

I have enclosed a cheque with VOID written across it for *Stratford General Hospital Foundation* to arrange the monthly withdrawal from my bank account.

*At the end of the year, we will issue you an official receipt for the total amount of your donations.*



## YOUR DONATION COUNTS!

Please take a moment and reflect on what our community would be like without our hospital. Our health care team has one main focus - YOU - the patient. In the last year the health care team has touched the lives of countless people and their families with their compassion, skill and expertise.

Every gift you give impacts the care we are able to provide. Your support purchases essential medical equipment - equipment we can't afford to be without. We count on you to help us provide quality and patient-focused care. Thank you!



STRATFORD GENERAL HOSPITAL

*Foundation* 

*"People Caring for People"*

YES, I care! I wish to support our Hospital.

Name: \_\_\_\_\_ Address: \_\_\_\_\_

City: \_\_\_\_\_ Postal Code: \_\_\_\_\_ Telephone: \_\_\_\_\_

Enclosed is my cheque to Stratford General Hospital Foundation.

\$1,000  \$500  \$250  \$100  \$50  \$25 I prefer to give \$ \_\_\_\_\_

Visa  MasterCard Card # \_\_\_\_\_ Expiry Date \_\_\_\_\_

I'd like to pledge my support of \$ \_\_\_\_\_ each year over the next \_\_\_\_\_ years.

Signature \_\_\_\_\_ Date \_\_\_\_\_

A receipt will be issued for tax purposes. Charitable Registration # BN 11920 0004 RR0001

*Our donor records are confidential. We do not share our lists.*

*Thank you for caring!*



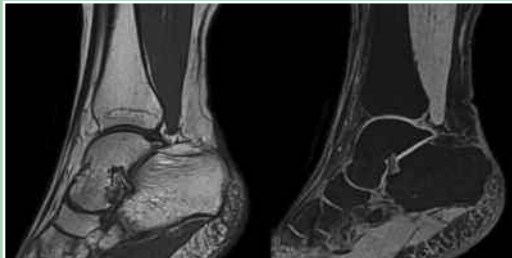
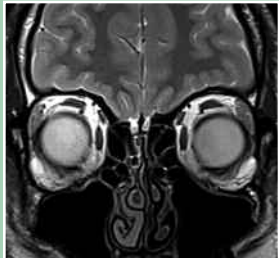


## Just picture how an MRI could Make a Real Impact on your life...

- Quicker, easier access to life-saving technology
- It's the most effective tool we have to help diagnose a multitude of diseases and conditions
- Reduced waiting times for scans, with no need to travel to London, Owen Sound or other locations



- Ability to scan pediatric patients
- "Large Bore" design provides extra space to accommodate larger patients, those with physical challenges or claustrophobia
- Ability to attract new physicians, technicians and other healthcare professionals to our region.



## SGH FOUNDATION MONITOR...

is published for the information of our donors, supporters and friends of the SGH Foundation.

### STRATFORD GENERAL HOSPITAL FOUNDATION

46 General Hospital Drive, Stratford, ON N5A 2Y6

*The SGH Foundation works with the community to help raise funds for equipment, upgrading of facilities and special projects of the Stratford General Hospital.*



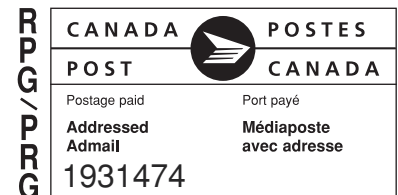
Readers will note a change to coated paper, which is the same cost and allows clearer pictures. Contains recycled fibre and is recyclable.

Charitable Reg. BN 11920 0004 RR0001



Stratford General Hospital Foundation is listed as a Code Builder...one of the first 100 charities nationally to comply with Imagine Canada's Ethical Fundraising and Accountability Code earning the right to proudly display the Ethical Code trustmark on all our fundraising materials

Stratford General Hospital Foundation  
46 General Hospital Drive  
Stratford, Ontario N5A 2Y6



RETURN POSTAGE GUARANTEED  
PORT DE RETOUR GARANTI

STRATFORD GENERAL HOSPITAL  
*Foundation* ♥

"People Caring for People"

